



LIGHTING CONTROLS

AUTOPHOS 20A RELAY

APR20

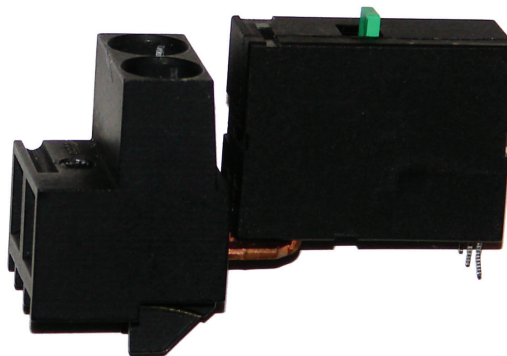
AUTOPHOS

DESCRIPTION

The AUTOPHOS® APR20 relay provides the capability to switch line voltage lighting circuits. These improved long-life relays with direct manual override can be switched on or off without power to the control panel. This allows the electricians to manually control the circuits during installation and allows authorized users to override the circuits after installation. This capability is not common in most lighting control products.

FEATURES

- **Maximum reliability and performance for direct load control**
- **300,000 cycles at full load**
- **20,000 amps at 277 VAC SCCR**
- **Manual SPST latching override switch**
- **For use with Autophos® and CL series lighting panels and retrofit interiors**



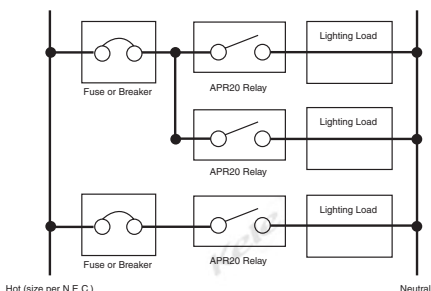
APR20



SPECIFICATIONS

Relay Type	SPST contacts latching with manual override lever	Relay Terminals	Single conductor, #8-#14 AWG, solid or stranded, copper only Two conductor, #10-#14 AWG, solid or stranded, copper only
Short Circuit Current Rating	20,000 Amps @ 277 VAC	Operating Temperature	32° to 125°F (0° to 52°C)
Relay Life	300,000 electrical cycle rating at full load, 1,000,000 mechanical cycle rating at any load	Operating Humidity	20% - 95% RH, non-condensing
Contactor Ballast	20 Amp @ 277 or 347 VAC	Approvals	UL-recognized component UL E133813
Contactor Tungsten	20 Amp @ 125 VAC	Weight	0.15 lbs (0.07 kg)
Resistive Load	20 Amp @ 277 or 347 VAC	Warranty	2 years

WIRING



DIMENSIONS

ORDERING INFORMATION

MODEL APR20	DESCRIPTION AUTOPHOS® 120/277 VAC 20A relay
-----------------------	---

Autophos® Series CL Series	RELATED PRODUCTS Integrated Lighting Control Panels and Retrofit products Integrated Lighting Control Products
---	---